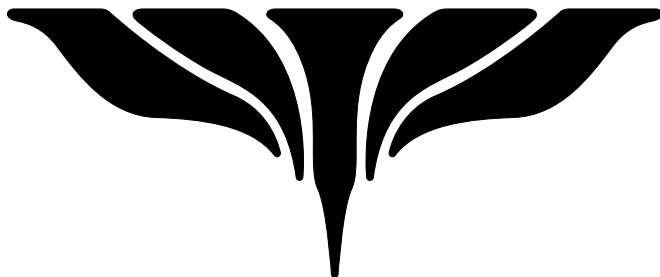


Please read the instructions
carefully before use.



EL ROCIO
e s p r e s s o m a c h i n e

MORESTO LIGHT

DXG2-R23

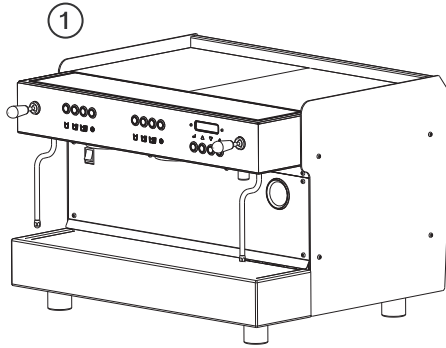
User Manual

MORESTO LIGHT

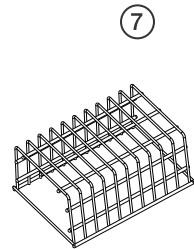
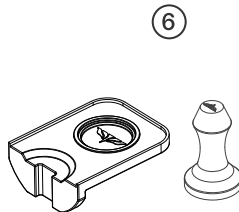
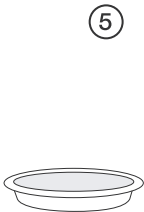
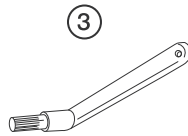
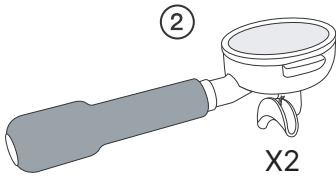
DXG2-R23

1. COMPONENTS
2. Precautions Before Use
3. How to Use the Product
4. Setting Menu
5. Cleaning & Maintenance
6. Frequently Asked Questions

COMPONENTS

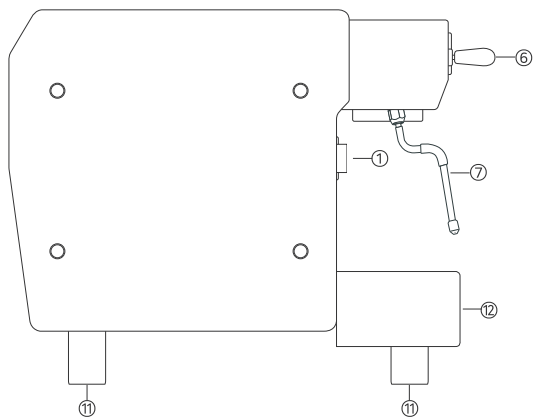
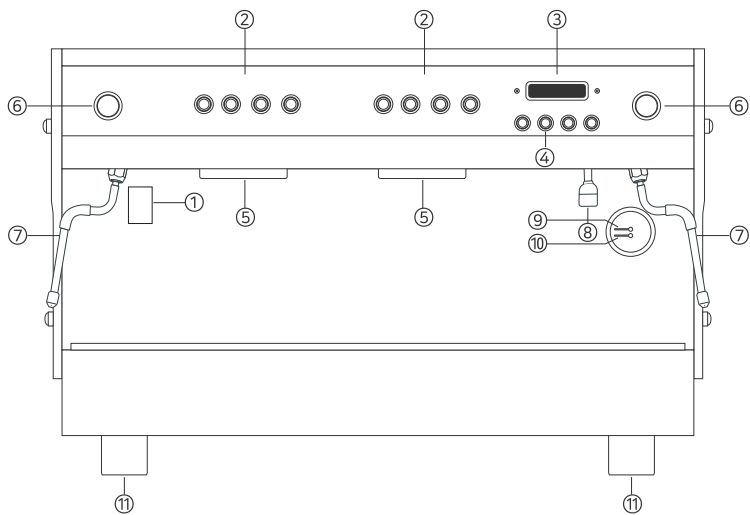


- ① Main Unit
- ② 2-spout Portafilter * 2ea
- ③ Cleaning brush
- ④ 18g Basket * 2ea
- ⑤ Blind Basket
- ⑥ Tamper & Tamping mat
- ⑦ Shot Tray



	68Kg	3200W	735mm(W) x 600mm(D) x 500mm(H)
--	------	-------	--------------------------------

COMPONENTS



- ① Power switch
- ② Brewing Button
- ③ LCD screen
- ④ Setting & Hot water button
- ⑤ Group head
- ⑥ Steam lever

Precautions Before Use

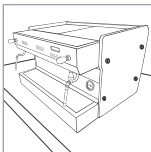
*** Please read the instruction manual carefully before use this machine.**

The manufacturer is not responsible for any safety accidents resulting from ignoring the precautions.

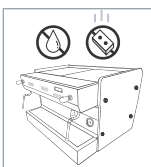


Weight: approx. 68kg

Burn Hazard



- Install the product in a proper position.
- Use the product on a stable surface.
- When moving the product or replacing the water hydraulic system parts,
- drain the hot water & steam boiler and wait until both boilers have completely cooled.



- Do Not place liquid such as water or milk on the cup warmer.
- Avoid covering the product with cloths during use.

! Burn Hazard !



Handle with care!

- Unpacked the product and check the damage.
- If there is any suspicion of damage or defects, do not use the product. Contact the manufacturer, authorized service center or seller immediately.
- Keep children away from the parts that may cause burns or injuries.
- This product is manufactured to specifications that can be used in Korea.
- 220V / 60HZ / 3,200W
- Ensure the power supply matches the label before turning on the machine
- The label can be found after removing the drain tray, on the lower left side.
- The installation site must comply with local regulations and manufacturer's guide line, and installation should be performed by a skilled professional.



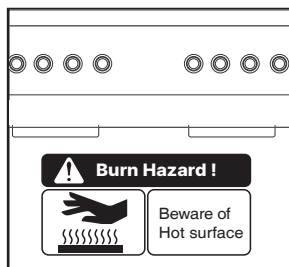
- The product must be installed with proper grounding for electrical safety.
- The manufacturer is not liable for any damage resulting from improper grounding.

Precautions Before Use

- Do not use the machine if you lack the necessary knowledge, experience or training.
- Ignoring warning message may result in personal injury or damages.
- Keep the sharp object and liquid away from the power supply.
- Please install and use it away from heating appliances or electronic products.



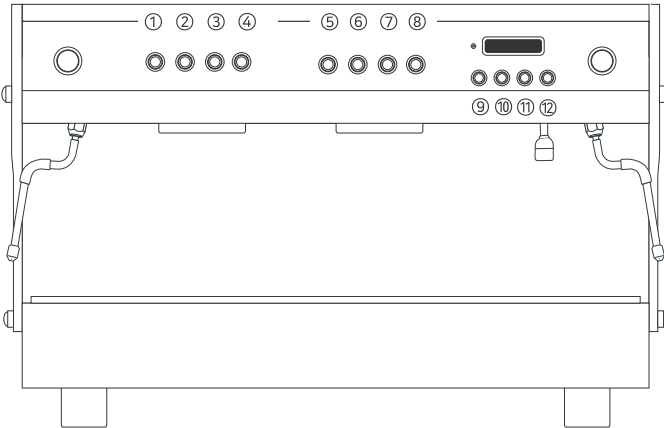
- Use a wet hand on the power switch could cause electric shock.
- The power cord must be intact and free of damage.
- Damaged power cord should be replaced by the manufacturer or an authorized service technician.



BURN WARNING

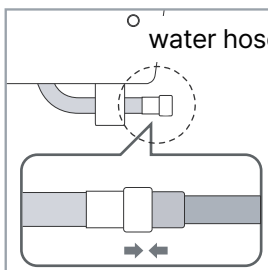
There is a risk of burns if you come into contact with heated group heads after the machine has powered on.

Component(Front view)



- | | |
|---|---|
| ① No.1 extraction button (Group head 1) | ⑦ No.3 extraction button (Group head 2) |
| ② No.2 extraction button (Group head 1) | ⑧ Free extraction button (Group head 1) |
| ③ No.3 extraction button (Group head 1) | ⑨ Setting button; Menu / Enter |
| ④ Free extraction button (Group head 1) | ⑩ Setting button; UP |
| ⑤ No.1 extraction button (Group head 2) | ⑪ Setting button; Down |
| ⑥ No.2 extraction button (Group head 2) | ⑫ Hot water button |
| | ⑬ LCD screen |

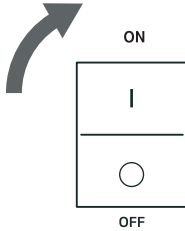
1) Water supply connection



- Check the water hose under the machine to water supply.
- After ensuring the water supply hose, connect with water feeding hose.
- Additional fitting or adaptor may be required when the size is different.
- The brew pressure and set flow rate of commercial use machines may change due to the hydraulic pressure of the install environment.
In this case, it is recommended to install a pressure regulating valve at the inlet of the flexible hose.
- Functional defects may occur in abnormal water supply environments.

How to Use the Product

2) Operation



① Connect the electric power after completion of water supply connection.

② Turn ON the main switch.

- OFF : Power off

- ON : It is possible to operate the water supply and maintain the state to fill the boiler with water.

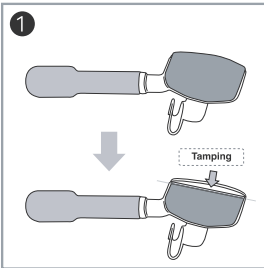
[On Initial use, the pump operates for 10 min to feed the water]

- START : After completion of preheating, it is fully operational and ready to extract coffee.

③ Preheating continues until the set temperature is reached.
(It takes 20~30 minute.)

* Please refer to the Settings menu page for how to set the temperature.

3) Brewing espresso

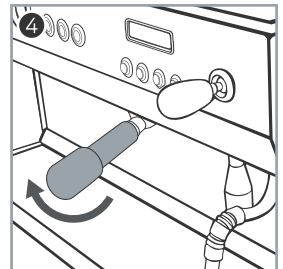
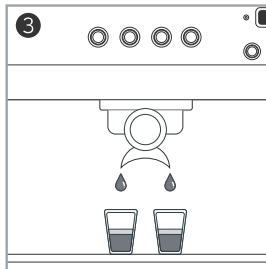
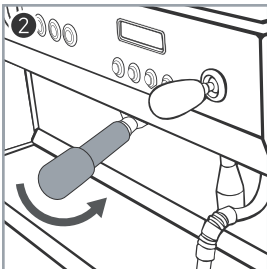


① Put an appropriate amount of coffee beans in the portafilter basket and tamp using the tamper.

② Install the portafilter's direction from the 8 o'clock position to the 6 o'clock position of the group head.- When installing, attach the portafilter so that both sides are horizontal.- Before installing, it is recommended to press the extraction button and let water flow for 3 to 5 seconds.

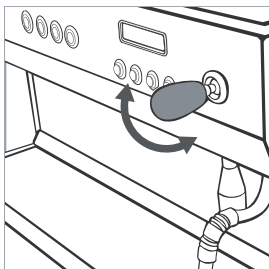
③ Press the extraction button to extract the coffee.

④ After extraction is complete, turn the attached portafilter to the left to detach it.



How to Use the Product

4) Milk steaming



1. Put the steam pitcher containing milk into the steam wand and move the steam valve to fix it, then steaming will begin.

- Steam can only be used when the steam boiler is fully preheated.

[The steam gauge pressure is usually 1~1.8 bar.]

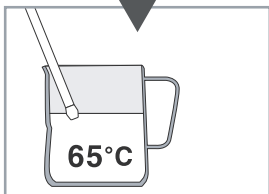
- A small amount of water in the steam pipe may be discharged when using steam.

[Please discharge the steam to remove the condensate before making the milk foam.]



2. When the milk reaches the appropriate temperature, return the steam lever to its original position, close the steam valve, and complete using steam.

- Please be careful as you may get burned by the steam wand when using steam for a long time.



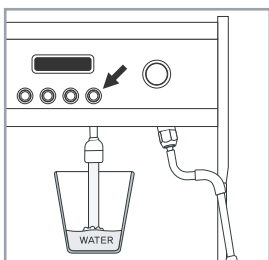
Burn Hazard !

☞ Even after you finish using Steam, residual steam may still be released.

5) Hot Water



Burn Hazard !



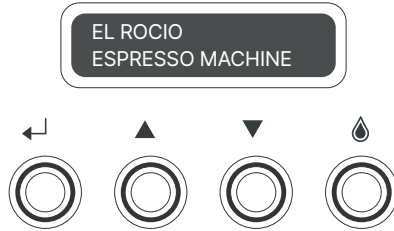
1. Press the button to get the hot water.

2. After receiving the desired amount of hot water, press the hot water spout button again to stop it.

- Be careful not to get burned by the hot water wand or high temperature water using this machine.

3. You can adjust the ratio of the injection with room temperature water by opening the mixing valve located on the lower right side of the machine.

Setting Menu



1. ↵ Button is to start [Setting mode]
2. ▲ ▼ Button is to move the setting menu. ↵ Button is to select the setting menu.
 - Press the ▲ ▼ button until the desired value is displayed.

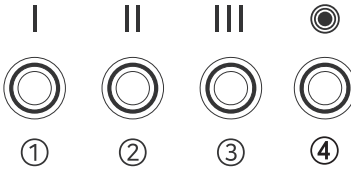
- Home : Go to the Home menu on screen.
- Steam Temp : Set the steam boiler's temperature.
- Inf. Time : Set the time of pre-infusion.

- Inf. Time : Set pre-infusion time for Group 1.

* Pre-infusion

- This process is for pre-wetting the coffee puck with low-speed, low-pressure of hot water to extract the coffee's ingredients more.
- The infusion time is the time to inject hot water for extraction into the coffee puck using the pressure of the direct water only, not using the pressure of the pump.
- Shotcount : Check the count of brewing time.

EXTRACTION FLOW RATE SETTING



- Press and hold the button (①, ② or ③) for 3 second to start extraction.
- Release the button when the desired flow rate is reached to set the automatic flow rate(amount of water).
- Free extraction button ④ is not available for setting of flow rate.

Flow Rate Adj (Fine-tune the flow rate)

Return

GR 1-1 adjust	No. 1 button of No.1 group head
GR 1-2 adjust	No. 2 button of No.1 group head
GR 1-3 adjust	No. 3 button of No.1 group head
GR 2-1 adjust	No. 1 button of No.2 group head
GR 2-2 adjust	No. 2 button of No.2 group head
GR 3-2 adjust	No. 3 button of No.2 group head

1. After entering the menu, press Flow Rate adj and press the button you want to set the extraction amount to extract the desired amount.
2. Press the setting button again to save the contents, and the extraction amount set for subsequent extractions will be extracted.
3. Free extraction button ④ is not available for setting of flow rate.

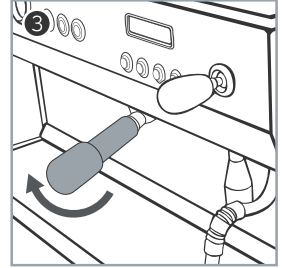
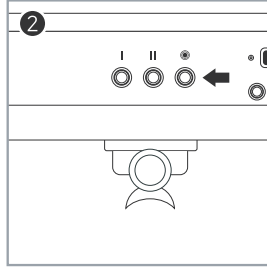
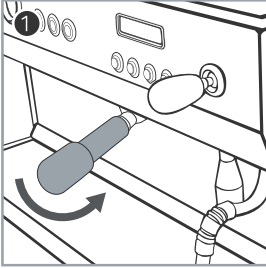
Flow Rate Adj COPY


Return

GR1 to GR2 Copy	Copy of contents of No.1 Group to No.2 Group.
GR2 to GR1 Copy	Copy of contents of No.2 Group to No.1 Group.

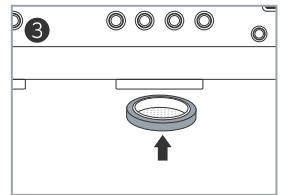
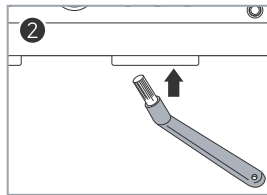
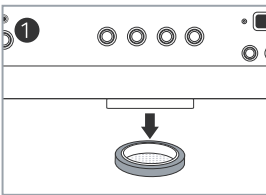
Cleaning & Maintenance

1) Auto cleaning (Back flushing)



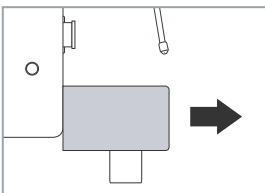
1. Attach the portafilter with the blind basket to the group head.
2. Press the  free button for more than 5 seconds to start auto cleaning.
When cleaning starts, the following sequence will be performed: 10 sec cleaning → 5 sec waiting → 10 sec cleaning → 5 sec waiting, for a total of 5 times.
3. After auto cleaning is finished, remove the portafilter with the blind basket.

2) Cleaning for group head



1. Take off the shower screen from the group head. (Please be sure to use tools when performing this task and be careful not to damage the group head.)
2. Clean the inside of the group head thoroughly with a cleaning brush.
- After cleaning, it is recommended to flush the group head with water several times.
3. After cleaning, install the shower screen using the portafilter.

3) Cleaning for drain box



1. Grasp both ends of the drain with both hands and slowly pull it forward.
2. Slowly pull the drain and completely separate it from the coffee machine.
3. After separation, clean it and reassemble it in reverse order.

Q) There is a noise coming from the steam.

A) The vacuum cleaner of the steam boiler is working to fill the pressure.

- If the noise continues even when the steam boiler is fully pressurized, please contact with Authorized service center for technical advice.

Q) Power is turned on, but preheating does not occur.

A) Please check the position of the power switch. If the power switch is in the ON position, the level is recognized, but preheating does not occur. Be sure to turn the power switch to the START position.

- If the power switch is in the START position, but preheating does not occur, please check the current temperature status and receive technical advice.

Q) The pressure is not properly applied during extraction.

A) After attaching the blind basket to the portafilter, check the maximum pressure while back-flushing the group head. If the extraction pressure is between 9 and 10 bar, the pump output is normal, and adjust the pressure by adjusting the grinding degree of the coffee beans.

* All heating elements are equipped with three safety devices.

* You must replace consumables periodically according to a certain period of time to use the product safely and for a long time.

CONSUMABLE	PERIOD
GASKET	6 MONTH
SHOWER SCREEN	1 YEAR
BASKET	1~2 YEAR
VACUUM VALVE	1 YEAR





MORESTO LITE

DXG2-R23

elrocioespressomachine.com